

## GlucoMen<sup>®</sup> areo Quick Start Guide

### How to perform a blood glucose measurement



1

Introduce a new GlucoMen<sup>®</sup> areo test strip into the top of the meter.



2

Obtain a drop of blood.



3

Apply one drop of blood onto the end of the test strip.



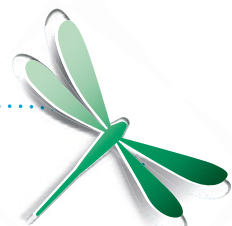
4

After 5 seconds, the measurement result is displayed.



5

Press the eject button to remove the test strip hygienically.



# Glucomen<sup>®</sup> areo Display Message

## Message

## What does this message mean?

## What should I do?



Hardware error

Contact our service team



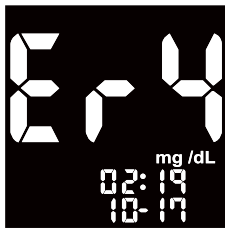
Test strip damaged or soiled

Use a new test strip



Blood sample error

Apply more blood to a new test strip



Test strip removed too early

Repeat the test with a new test strip



NFC connection lost

Repeat transmission

